

## Getting the most out of your upholstered furniture

Knowing how to clean your upholstered furniture safely is of the utmost importance in the care sector. Please ensure you read this guide in full before cleaning your items.\*

### *How to avoid stains*

**WIPE CLEAN ANY SPILLAGES WITHIN 15 MINUTES**

Most stains can be removed by simply wiping clean. Chemicals aren't normally required if a spillage or stain is attended to on time.



### *Regular maintenance tips*

**WIPE CLEAN ANY SPILLAGES WITHIN 15 MINUTES**

Vacuum and clean with a damp microfibre cloth regularly to prevent build up of dust particles and soiling.

Items can be steam cleaned in-situ if required.

If using a cleaning product, please ensure you patch test on a non-visible section of upholstery to verify suitability.



## Clearing up spillages and stains

**SPILLAGES SHOULD INITIALLY BE WIPED AWAY AS MUCH AS POSSIBLE WITH A MICROFIBRE DRY CLOTH**

Any residue can then be cleaned with a microfibre cloth made damp with cold water. No detergents should be required.

- ✿ For heavier soiling, including oil-based stains, a mild proprietary cleaner can be used. Be careful to ensure that all cleaning product residue is removed to maintain the efficiency of the stain repellent layer on the upholstery.
- ✿ When using alcohol and solvent-based cleaners or wipes containing strong cleaning agents, ensure to exercise extreme care on application, particularly to faux leather as repeated use on faux leather and vinyl's can cause them to crack.
- ✿ Extreme soiling may be cleaned with a 5% Sodium Hypochlorite solution (bleach) if the upholstery is deemed suitable. Ensure that any cleaning product residue has been fully removed from the upholstery.
- ✿ Spillages should initially be wiped away as much as possible with a microfibre dry cloth.
- ✿ Bodily fluids should always be removed with cold water, and cleaned as above.
- ✿ Under no circumstances should you machine wash, fully immerse, dry clean or use solvent-based chemicals or stain removers.
- ✿ Poorly fixed clothing dyes, such as denim, will cause permanent staining.



**DO NOT REMOVE CUSHION COVERS TO WASH SEPARATELY**

This will destroy the waterproof layer within the upholstery

# Furncare



**CLEANING & CARE INSTRUCTIONS**

VERSION 3.0

\*The Furncare guarantee on your item will be invalid if these instructions are not followed.



THESE INSTRUCTIONS ARE ONLY RELEVANT FOR OUR MOST COMMONLY SUPPLIED PRINTED CURTAINS

If your curtains are woven these instructions do not apply.

## DO NOT LAUNDRY UPHOLSTERED PRODUCTS, INCLUDING REMOVABLE SEAT CUSHIONS

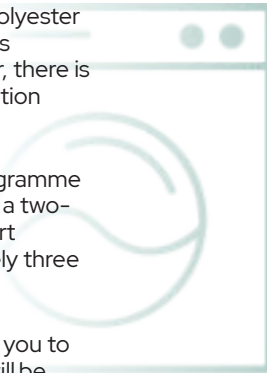
Please see overleaf for these items. Unsure if these instructions are relevant to your products? Contact the Furncare Team on 01603 664 900.

## Sorting your laundry

It is recommended that whites and coloured items are washed separately. FR polyester should not be washed with cottons as this would adversely affect the flame retardancy of the fabric through migrating cotton fibres.

## General laundering tips

- ✿ Polyester in general doesn't need long, hard washes as any soiling tends to sit on surface fibres rather than in them.
- ✿ If the washing machine has a polyester setting, this will be sufficient! As polyester doesn't absorb water, there is a reduced need for long extraction times (spins).
- ✿ If you are setting the wash programme by hand, we recommend using a two-wash system followed by a short extraction time of approximately three minutes.
- ✿ If your washing machine allows you to select a spin speed, 500rpm will be adequate.



## Washing tips to help you protect and extend the life of your curtains and soft furnishings



**DON'T OVERLOAD THE WASHING MACHINE**  
With polycotton, the best results are achieved with a 70% load by weight.



## Did you know?

Other than the fabric conditioners mentioned here, such conditioners and fabric fresheners can mask flame retardant properties of the fabric and therefore should not be used.



*Need help?*

CONTACT US

01603 664 900  
sales@furncare.co.uk